

Cutting Multi Tool / Cutters / Portable Cut-Off Machine / Disc Cutter

CV 350V Multi Tool



Features

- HiKOKI's original easy tool-less accessory change
- AUTO Mode function reduces vibration and noise in no-load operation
- 37 types of optional accessories available for various applications
- Small grip circumference



Specifications

Power Input	350W
Oscillation Frequency:	
Standard Mode (Dial 1 - 5)	6,000 - 20,000/min
AUTO Mode (Dial A)	15,000 ⇄ 20,000/min
Oscillation Angle	3.2°
Overall Length	280mm
Weight*1	1.5kg
Standard Accessories*2	Fad(MU93D), Sanding Papers, Blades, Tool Box, Carrying Case



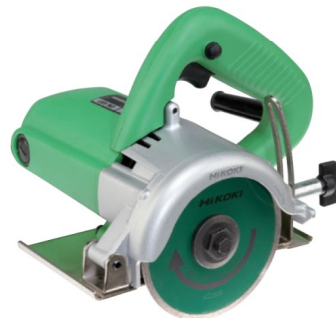
*1. Weight according to EPTA-Procedure 01/2003.
*2. Standard accessories may vary by country or area.

999005

CM 4ST 110mm Cutter

Features

- Dust proof switch



CM4ST with an optional diamond wheel

Specifications

Capacity: Wheel Dia.	110mm
Max Cut Depth	34mm
Power Input	1,300W
No Load Speed	13,000/min
Overall Length	214mm
Weight	2.9kg
Standard Accessories	Wrench



999043

CM 4SB2 110mm Cutter

Features

- Metal bush on a ball-bearing and sealed armature coil for durability
- Soft grip handle
- Tool-less depth adjustment



CM4SB2 with an optional diamond wheel

Specifications

Capacity: Wheel Dia.	110mm
Max Cut Depth	34mm
Cut Depth per cut	20mm
Power Input	1,320W
No Load Speed	11,500/min
Overall Length	204mm
Weight	2.8kg
Standard Accessories	Water Plug, Rubber Connector, Wrenches, Vinyl Hose



999043

CM 5SB 125mm Cutter with Slide Switch

Features

- Max power output 1,900W with overload durability
- Wear resistance of armature coil
- Dust collection



CM5SB with an optional diamond wheel

Specifications

Capacity: Wheel Dia.	125mm
Max Cut Depth	30mm
Power Input	1,300W
No Load Speed	11,000/min
Width of base	33.5mm
Overall Length	314mm
Weight	2.9kg
Standard Accessories	Side Handle, Wrench, Carrying Case, Dust Collection Adapter



999088