

# Cup Mounts

Type CT



## ALL ATTITUDE SHOCK AND VIBRATION ISOLATOR

- All directional loading
- Self capturing features
- Rugged fail- safe construction
- Wide load range From 1.4 kg to 817 kg
- Nominal 30Hz Natural Frequency
- Low Height installation
- Low Transmissibility at Resonance

Specially designed for the protection of equipment from high impact shock, medium to high frequency vibration and as a barrier against the transmission of structure borne noise.

This self capturing all attitude isolator can be used for almost any mobile and stationary installation.

Equipments subjected to high frequency shocks and impacts generated due to accidental or careless handling during transit or travel over harsh terrain rough sea conditions or gunfire and other explosions on land, sea or air are made more reliable by mounting them on correctly selected CUP TYPE SHOCK MOUNTS

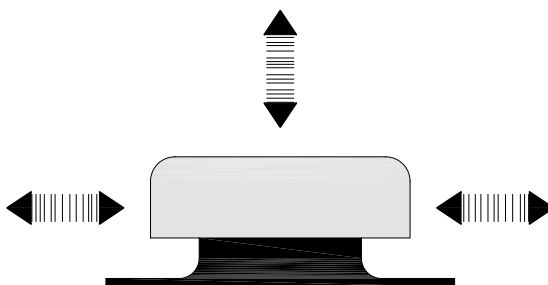
Cupped interlocking metal parts containing rubber in compression elements ensure that loads can be safely applied in any direction.

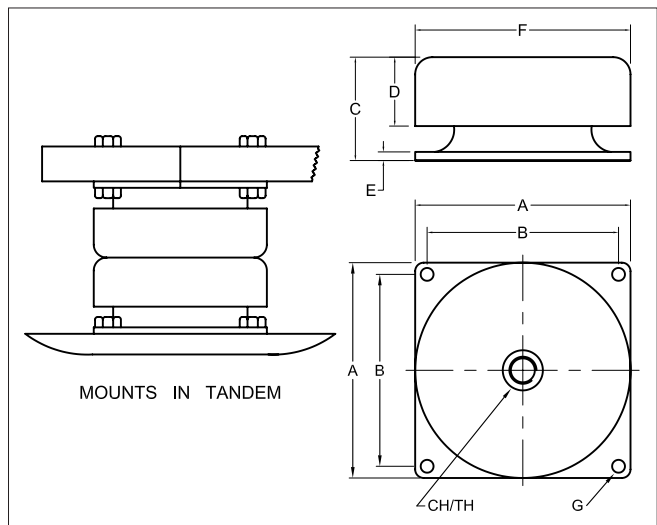
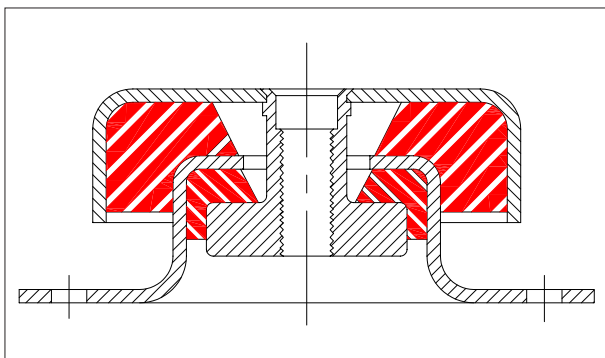
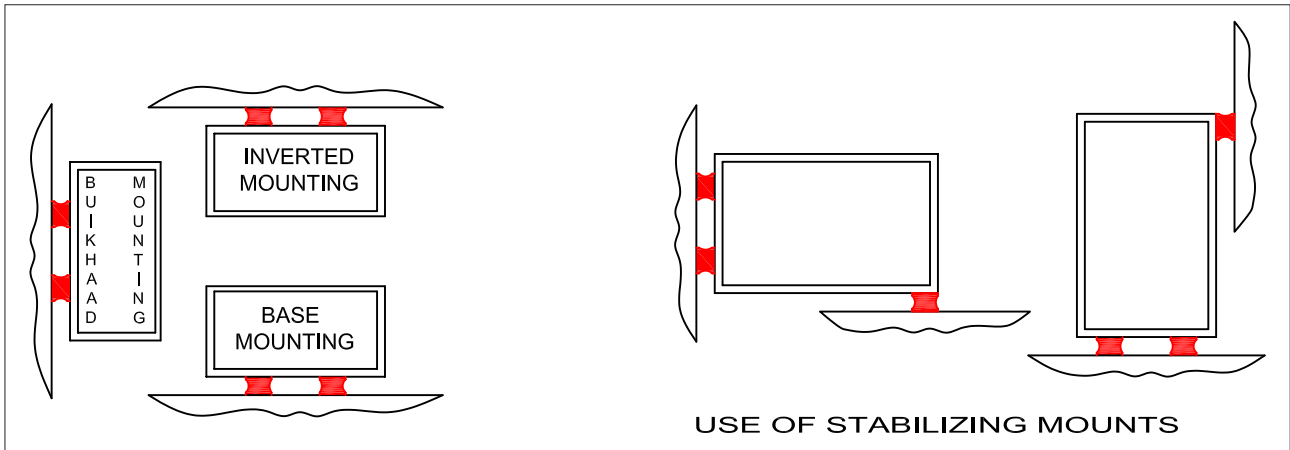
## TYPICAL APPLICATIONS

Vehicular electronic, motors, fans, machinery transformers, railroad, equipment, blowers centrifuges, and control panels communication equipment, radar in land vehicles, ships and aircrafts.etc.etc

The characteristic of equal stiffness in all directions provides shock and vibration protection in all direction and permit loading radially or axially, upright or inverted

In some instances, where it is desirable to have greater deflection capabilities or a lower natural frequency isolated system, tandem paired isolators are supplied.





## TECHNICAL CHARACTERISTICS

		LOAD RATINGS					DIMENSION ( mm )								
CODE	TYPE	ES	SO	ME	HA	EH	A	B	C	D	E	F	G	CLEAR HOLE (CH)	TAPPED HOLE (CH)
CT-10	STATIC	9	18	27	36	45	60	49	28.5	18	1.6	57	5	6.5	M6
	MOBILE	3-5	5-9	9-14	14-18	18-23									
CT-20	STATIC	57	79	125	148	159	76	63.5	38	25	2.5	76	6.6	10.5	M10
	MOBILE	14-23	23-32	32-50	50-68	56-82									
CT-30	STATIC	113	182	295	408	-	133	108	63.5	38	4	124	13	16.5	M16
	MOBILE	28-45	45-70	70-90	90-129	-									
CT-40	STATIC	272	363	635	817	-	175	143	90.5	59	4.7	167	13	16.5	M16
	MOBILE	36-54	54-84	84-129	129-240	-									
COLOR		Brown	Green	Blue	Red	Orange									

For more detailed information and technical assistance, please contact our Applications Engineering Group.  
In the interest of continual development and improvement, the company reserves the right to make modifications to these details without notice