

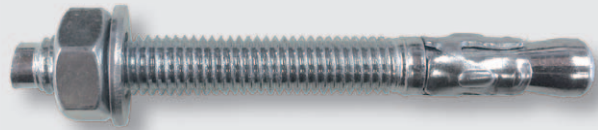
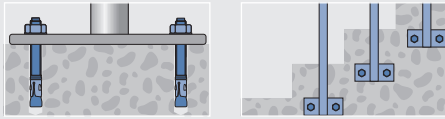
m2-A Throughbolt

Features

- Torque controlled expansion
- Pre installation or through fixing
- Indoor applications

Applications

steel constructions, profiles, machines, high-racks, cable trays

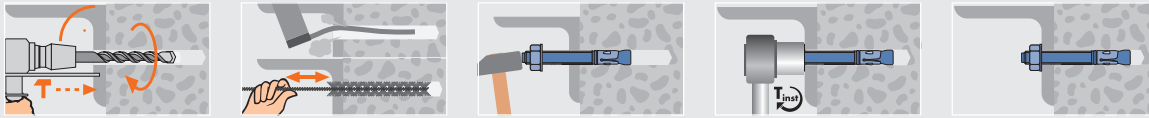


Technical Data

	Concrete C20/25 tension load (kN)	Installation torque (Nm) T_{inst}	Wrench size
M8	4.5	15	SW 13
M10	6.1	30	17
M12	6.7	50	19
M16	7.9	100	24

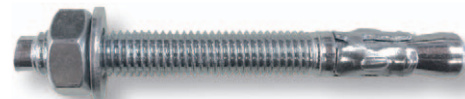
Safety factor of 3 is included / The technical data is only valid for single fixings without consideration of edge and anchor distances / 1 kN ≈ 100 kg

Installation



Article code	Plug and drill Ø mm $d_{nom} = d_0$	Length mm L	Drilling hole Ø mm d_0	Drilling depth mm h_0	Usable length mm t_{fix}	Effective anchorage depth mm h_{ef}	Clearance hole in fixture mm d_f	Box content	Outer carton
3500808	8	80	8	50	35	40	9	50	500
3500809	8	95	8	50	50	40	9	50	500
3501008	10	80	10	60	20	50	11	50	500
3501009	10	95	10	60	35	50	11	50	300
3501011	10	115	10	60	55	50	11	25	250
3501210	12	100	12	70	30	60	13	25	250
3501212	12	120	12	70	50	60	13	25	250
3501610	16	105	16	80	15	70	17	20	120
3501612	16	125	16	90	25	80	17	20	100

m2-A Throughbolt with washer DIN 125A



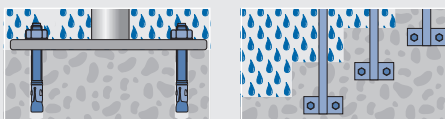
m2r-A Throughbolt, stainless steel A2

Features

- Torque controlled expansion
- Pre installation or through fixing
- Outdoor applications

Applications

façades, cable trays, railings, steel constructions, machines, high-racks, profiles

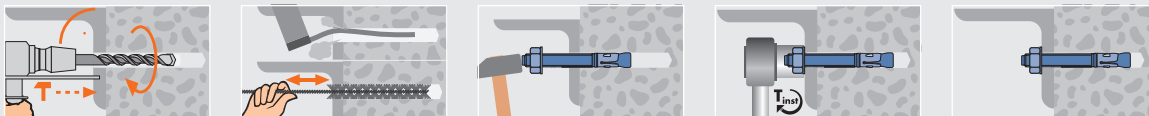


Technical Data

	Concrete C20/25 tension load (kN)	Installation torque (Nm) T_{inst}	Wrench size
M8	4.5	15	SW 13
M10	6.1	30	17

Safety factor of 3 is included / The technical data is only valid for single fixings without consideration of edge and anchor distances / 1 kN ≈ 100 kg

Installation



Article code	Plug and drill Ø mm $d_{nom} = d_0$	Length mm L	Drilling hole Ø mm d_0	Drilling depth mm h_0	Usable length mm t_{fix}	Effective anchorage depth mm h_{ef}	Clearance hole in fixture mm d_f	Box content	Outer carton
3550808	8	80	8	50	35	40	9	50	500
3551009	10	95	10	60	35	50	11	50	300

m2r-A Throughbolt with washer DIN 125A, stainless steel A2

