

# Spring & Rubber Hangers

Type SH & RH

licensed in 1992 by  
**CHRISTIE  
& GREY**



Hangers effectively Isolate transmission of Vibration and Structurally Sound.

Suspended Accoustical Ceiling have become an essential part of modern structures-Vibration & Sound waves emanating from the rest of the building are prevented from reaching the Accoustical Ceiling.

Hangers prevent many installation errors by permitting degree of freedom of movement of piping thus frequently eliminating the need of Flexible Hose Connections.

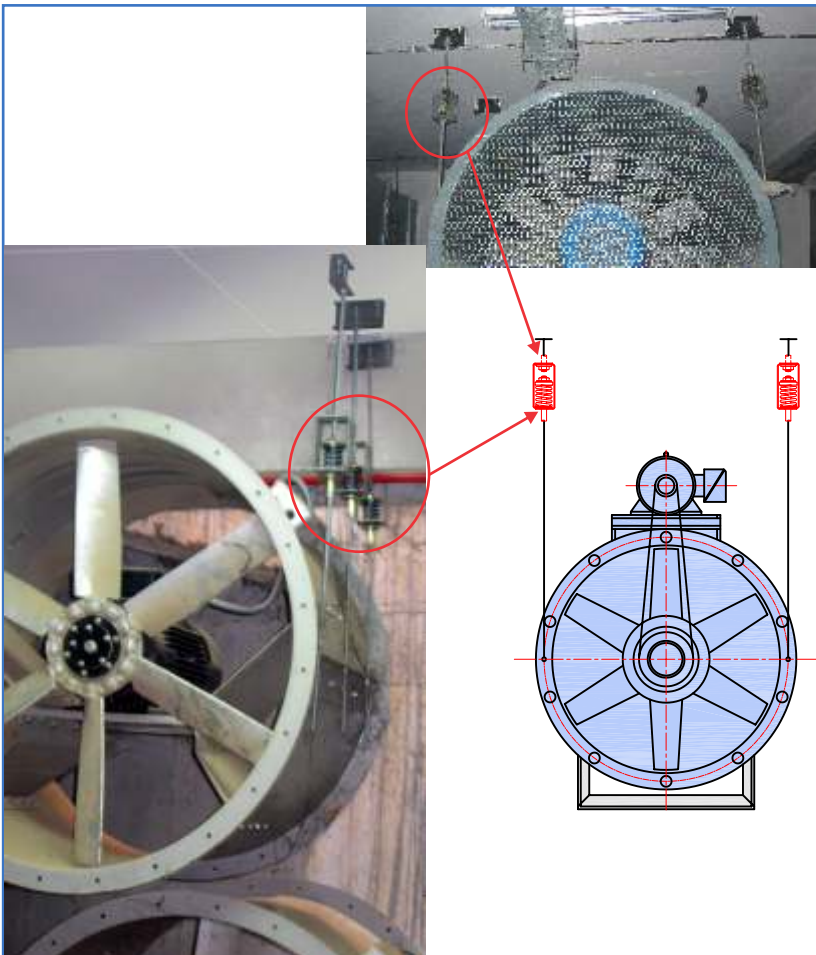
Hangers will also take care of expansion problems of riser Pipe lines.

Wide range of Hangers are available with Helical Coil Springs for Low frequency applications, Rubber-in-Shear for absorption of Sound and Shock with Combination of Coil Spring & Rubber-in Shear for critical areas.

Hangers are sturdily built for long rugged service with any combination of simple Rods on top and / or bottom, straps, 'J' Hooks to clevis, trapeze or roller system.

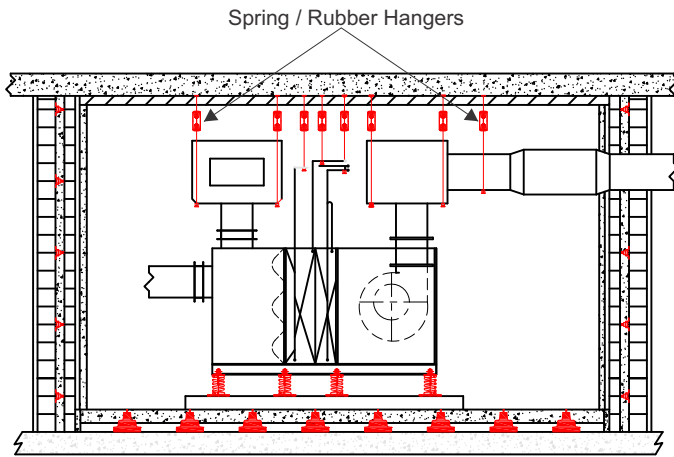
## DESIGN FEATURES

- **Steel frame** tested to 5x rated load. Other steel parts are zinc plated including ACH casing.
- **Colour coded steel springs** with nominal deflections up 50mm, laterally stable with 50% overload capacity.
- **Rubber inserts** for high frequency attenuation on type SH also to prevent drop – rod contacting hanger frame.
- **Failsafe steel overload washers** supplied with Rubber Hangers.
- **Captive assembly** with drop – rod connector on type SH allows Precompression of spring prior to installation if required.
- **15° angular misalignment capability.**
- **Stud or wire fixing** on type ACH.



## TYPICAL SUSPENSION APPLICATIONS

- \* Accoustical Ceiling
- \* Air Handling Units
- \* Air Conditioner
- \* Axial Fans
- \* Blowers
- \* Cooling and Heating Equipment
- \* Ductwork
- \* Exhaust System
- \* Fan Coil Units
- \* Fans
- \* Lighting Fixtures
- \* Mechanical Equipment
- \* Pipe Work
- \* Platform
- \* Small Pumps
- \* Ventilation
- \* Etc.etc.



## CEILING SUSPENDED



PIPING

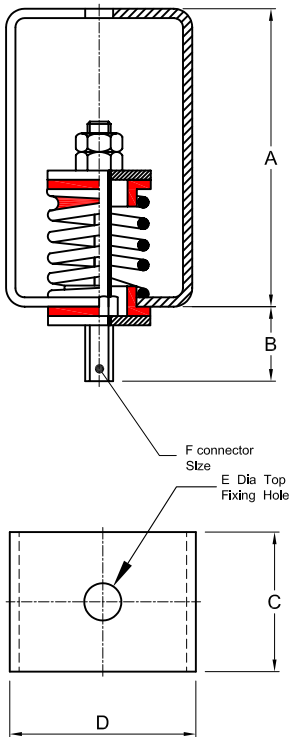


FAN COIL UNIT



BLOWER

TYPE SH



## TECHNICAL CHARACTERISTICS - SPRING HANGERS

PART NO.	COLOUR CODE	RATED LOAD (kgs)	DEFLECTION AT RATED LOAD (mm)	DIMENSIONS (mm)						Max. Wt. (kg)
				A	B	C	D	E	F	
SH 20 / 10	Purple	10	20	100	30.5	40	55	10	M8	0.35
SH 20 / 15	Yellow	15	20							
SH 20 / 20	Grey	20	20							
SH 20 / 40	Green	40	20							
SH 20 / 70	Red	70	20							
SH 15 / 100	Blue	100	15	140	36	70	90	11	M10	1.5
SH 25 / 30	Yellow	30	25							
SH 25 / 60	Green	60	25							
SH 25 / 100	Blue	100	25							
SH 25 / 160	White	160	25							
SH 25 / 250	Red	250	25	200	54	95	120	17	M16	4.2
SH 25 / 200	Red	200	25							
SH 25 / 300	Purple	300	25							
SH 25 / 400	Grey	400	25							
SH 25 / 500	Orange	500	25							
SH 25 / 600	Brown	600	25	200	54	95	120	17	M16	4.2
SH 25 / 800	Black	800	25							
SH 50 / 100	Yellow	100	50							
SH 50 / 200	Green	200	50							
SH 50 / 300	Blue	300	50							
SH 50 / 400	White	400	50	200	54	95	120	17	M16	4.2
SH 50 / 500	Red/Black	500	50							

PIPE BORE (mm)	WEIGHT PER METRE (kg)	LOAD PER HANGER AT TYPICAL SPACINGS (KG)						
		2m	2.5m	3m	3.5m	4m	4.5m	5m
50	10	20	25	30	-	-	-	-
65	14	28	35	42	49	-	-	-
80	18	36	45	54	63	-	-	-
100	26	52	65	78	91	-	-	-
125	34	68	85	102	119	136	-	-
150	44	88	110	132	154	176	-	-
200	86	172	215	258	301	344	387	-
250	118	236	295	354	413	472	531	590
300	153	306	382	459	535	612	689	765

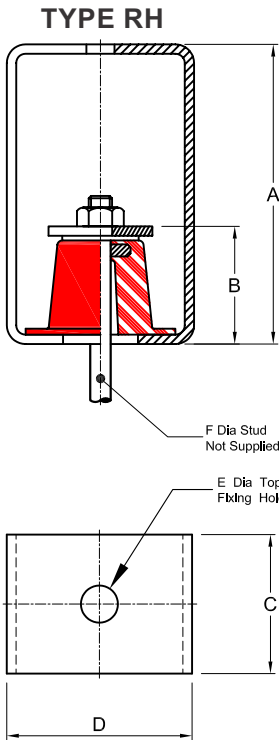
Pipe weights are based on BS. 10255, BS EN 10216-1 and BS EN 10217-1 for pipes with maximum volume of water and standard thermal insulation.

### INSTALLATION NOTES

- Pipes should be supported on either side of changes of direction and additional hangers used to support heavy fittings and vertical droppers.
- For larger pipe sizes two hangers can be used at each support position.

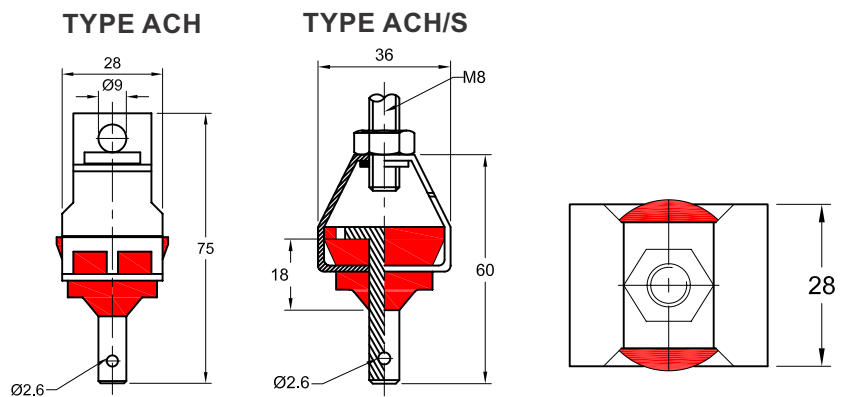
### INSTALLATION MANUAL

Refer to IM 029 for detailed Installation Instructions



PRODUCT CODE	SPRING COLOUR	RATED LOAD (kgs)	DEFLECTION at Rated Load (mm) $\pm 15\%$	DIMENSIONS (mm)						WT (kg) MAX
				A	B	C	D	E	F	
RH 28	Yellow	28	6	100	36	40	55	10	M8	0.31
RH 50	Blue	50	6							
RH 80	Red	80	6							
RH 110	Yellow	110	8	140	52	70	90	11	M10	1.24
RH 180	Blue	180	8							
RH 280	Red	280	8							

PIPE BORE (mm)	WEIGHT PER METRE (kg)	LOAD PER HANGER AT TYPICAL SPACINGS (KG)						
		2m	2.5m	3m	3.5m	4m	4.5m	5m
50	10	20	25	30	-	-	-	-
65	14	28	35	42	49	-	-	-
80	18	36	45	54	63	-	-	-
100	26	52	65	78	91	-	-	-
125	34	68	85	102	119	136	-	-
150	44	88	110	132	154	176	-	-
200	86	172	215	258	-	-	-	-



## TECHNICAL CHARACTERISTICS - ACCOUSTIC HANGERS

ACH 20	-	20	2	AS SHOWN	0.06
ACH/S20	-	20	2	AS SHOWN	0.06

### INSTALLATION MANUAL

Refer to IM 029 for detailed Installation Instructions

For more detailed information and technical assistance, please contact our Applications Engineering Group. In the interest of continual development and improvement, the company reserves the right to make modifications to these details without notice